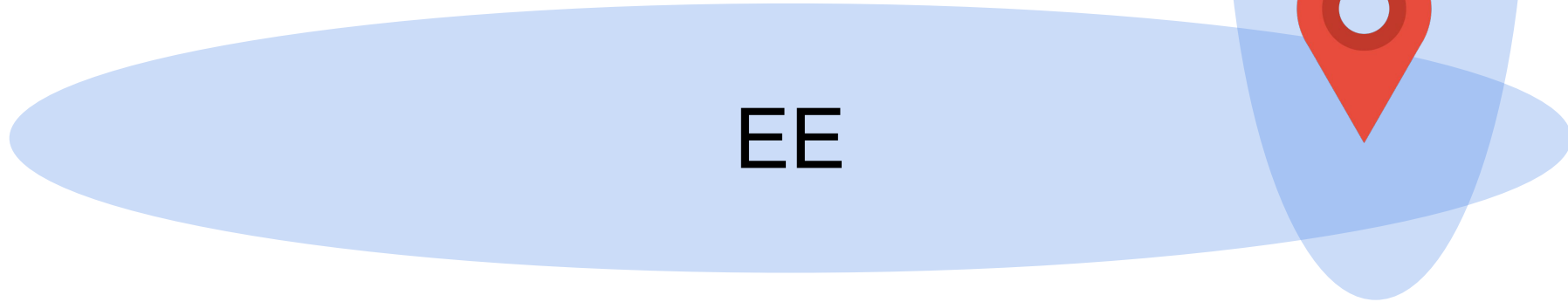


Welcome to Computer Engineering

Prof. Martha Kim



Cerebras' "Wafer Scale Engine"

Announced Aug 19, 2019

1.2T transistors (the most ever)

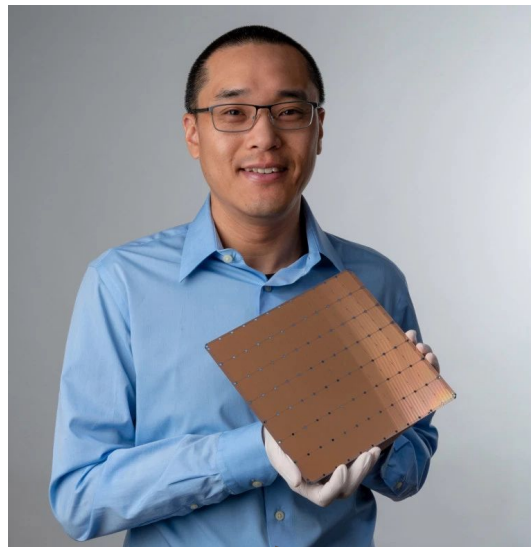
46,222 mm² (the largest ever)

18GB on-chip memory (the most available today)

400k cores (guess)

For more, see

- Tech Crunch "The five technical challenges Cerebras overcame in building the first trillion-transistor chip", Aug 2019
- cerebras.net "Cerebras Wafer Scale Engine: An Introduction"



CS

EE

Computer Engineering at Columbia



Prof. Martha Kim
Chair



Elsa Sanchez
Director of Student Affairs



Cassandra Kokofu
Student Affairs Manager



Raina Ranaghan
Career Placement Officer



Jiang



Seok



Shepard



Zukowski



Zussman



Carloni



Edwards



Misra



Rubenstein



Sethumadhavan