

Music Audio Research at LabROSA

Dan Ellis

Laboratory for Recognition and Organization of Speech and Audio
Dept. Electrical Eng., Columbia Univ., NY USA

dpwe@ee.columbia.edu

<http://labrosa.ee.columbia.edu/>

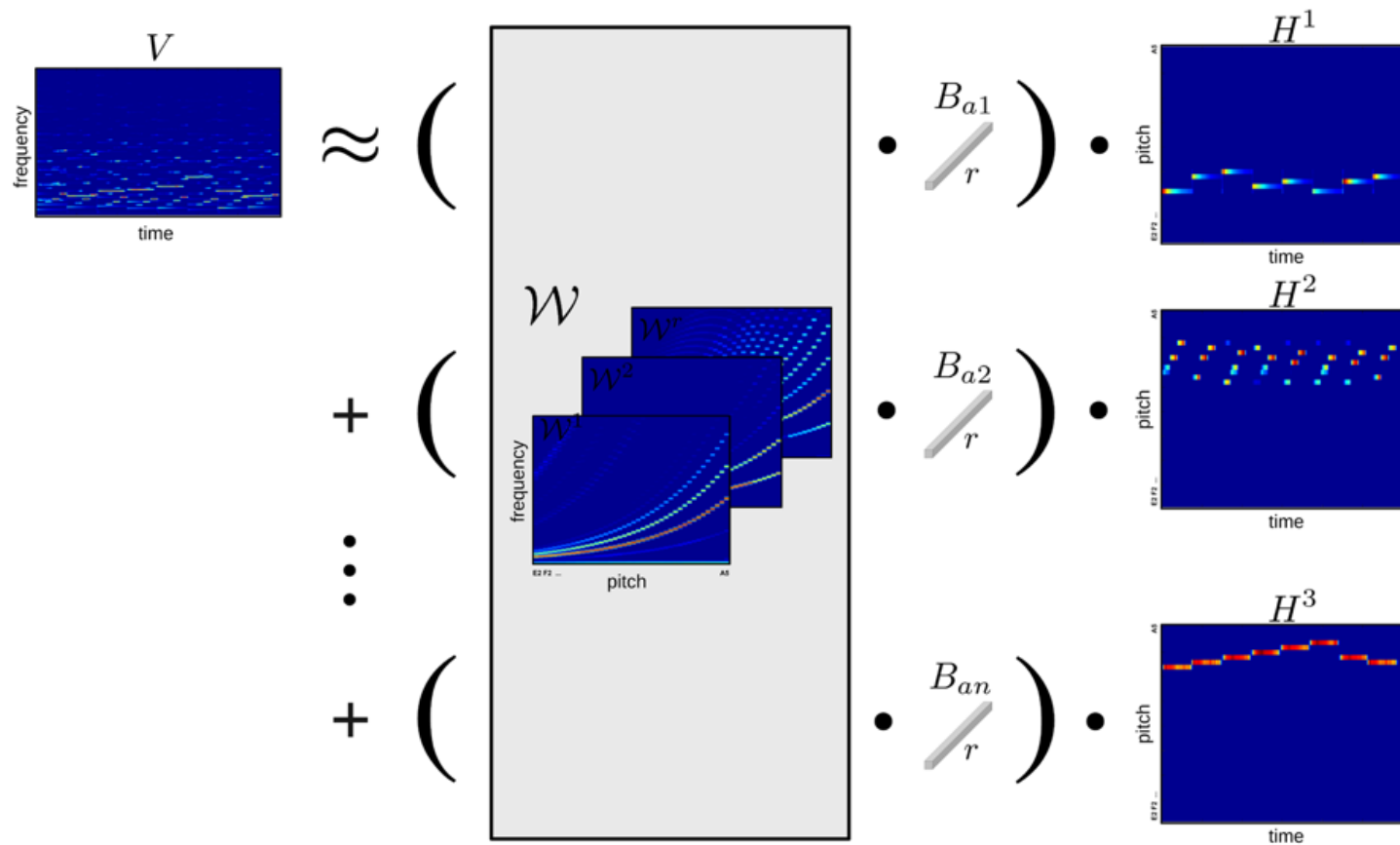


Graham Grindlay 1978-2011



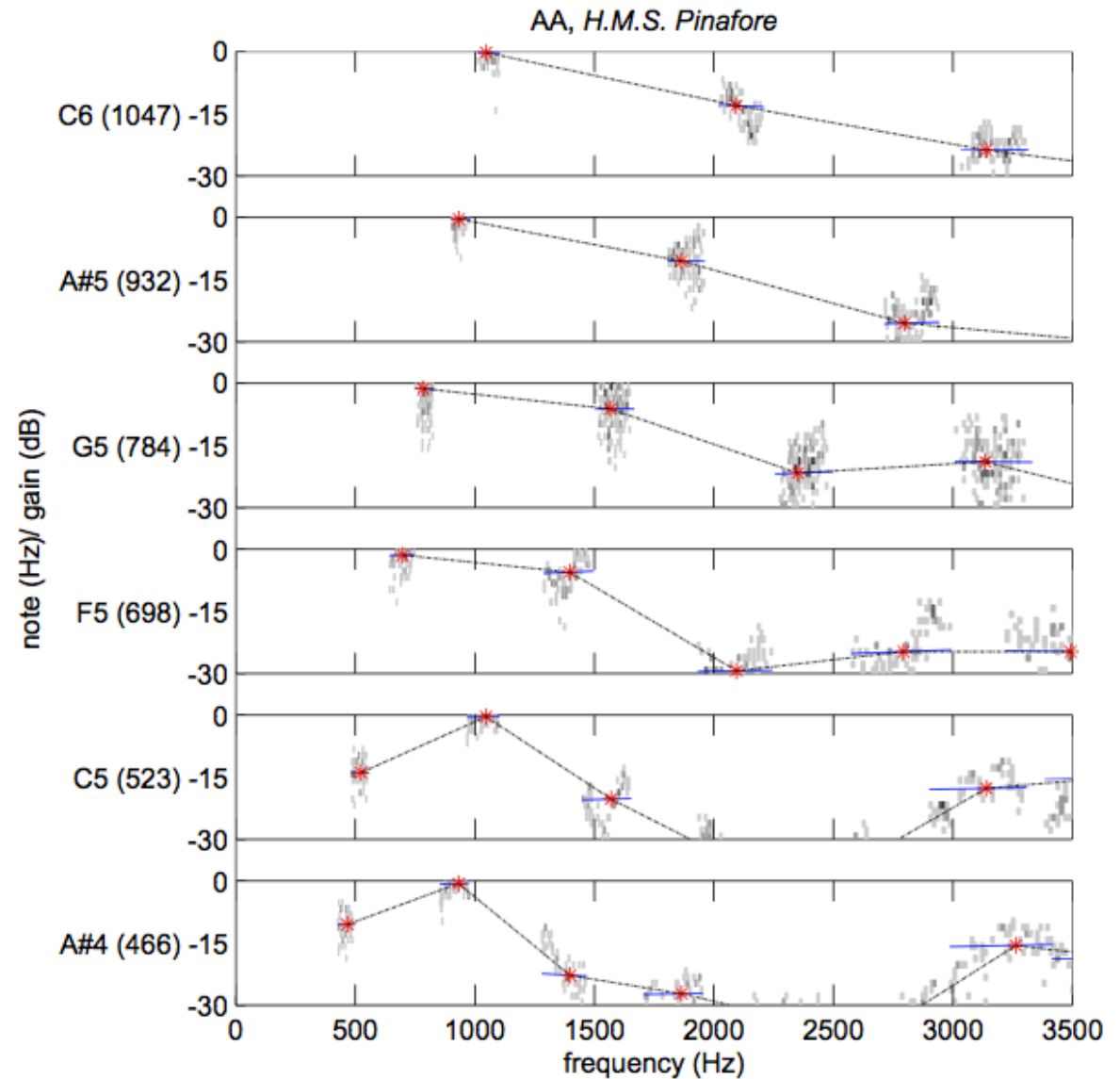
Current Projects at LabROSA

- Source- and Transformation-based transcription



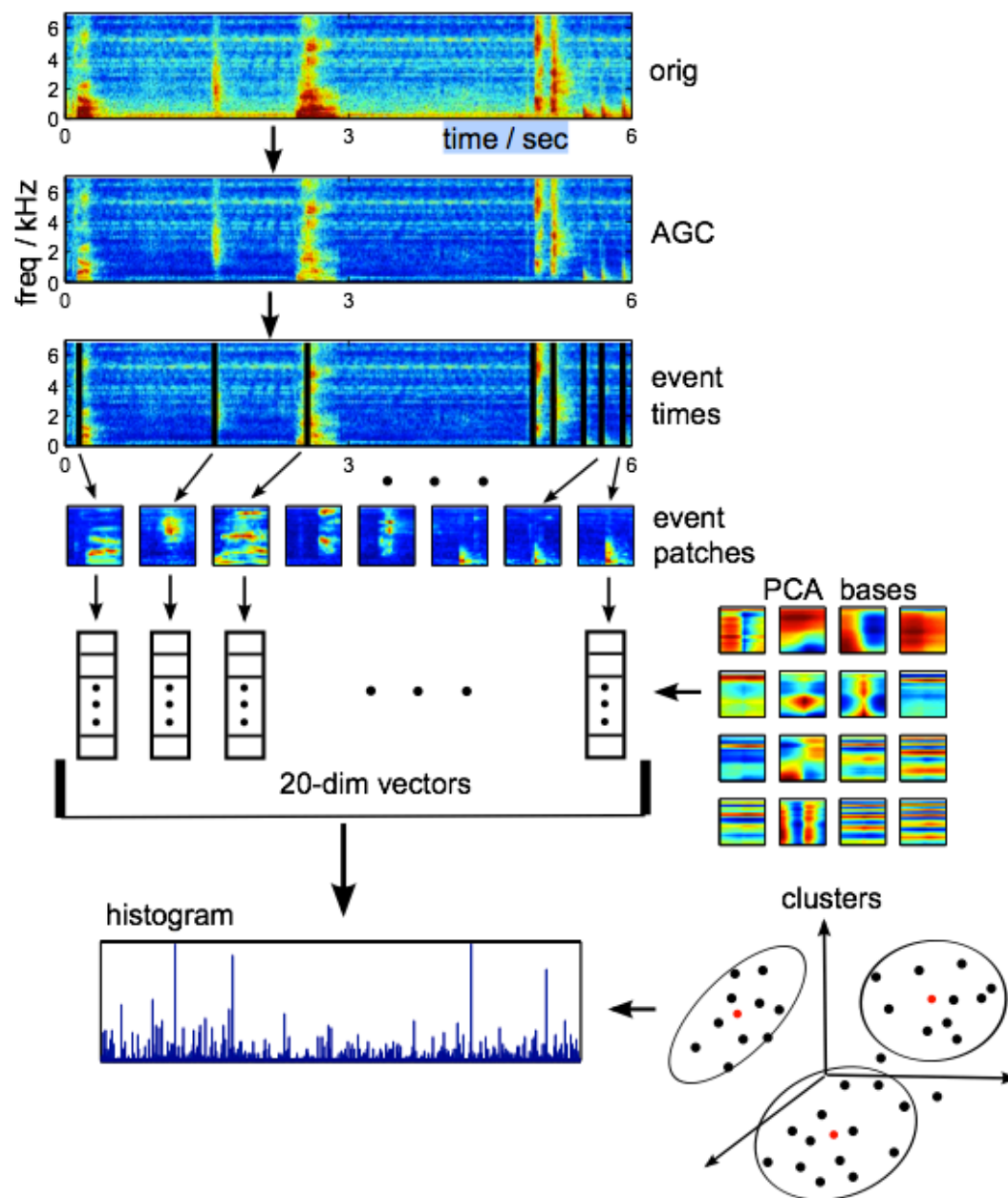
Current Projects at LabROSA

- Singing Analysis



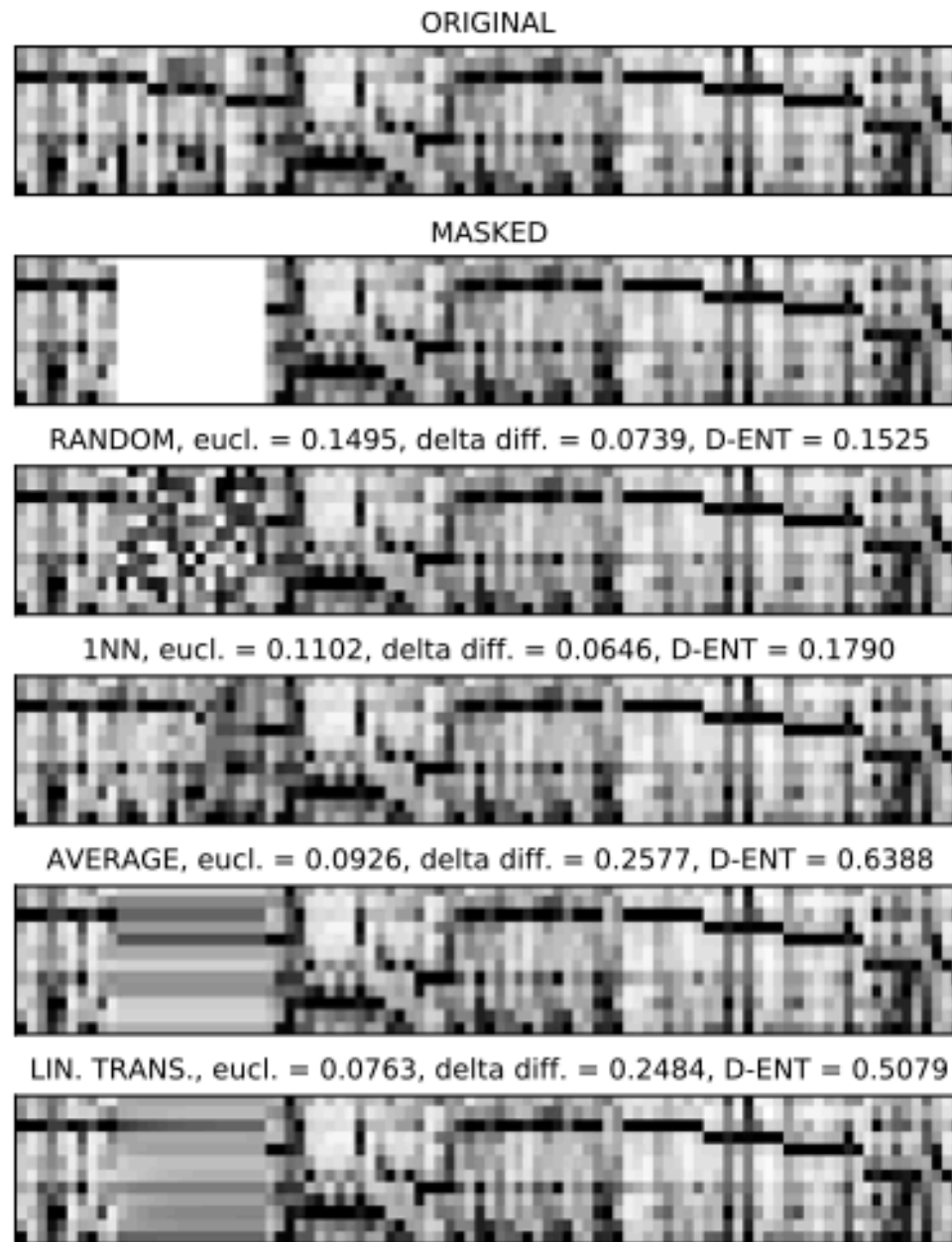
Current Projects at LabROSA

- Transient event decomposition



Current Projects at LabROSA

- Beat-chroma patch modeling



Million Song Dataset

- Concept
- Features
- Distribution

